

# University Park Police Department

# 2025

## November

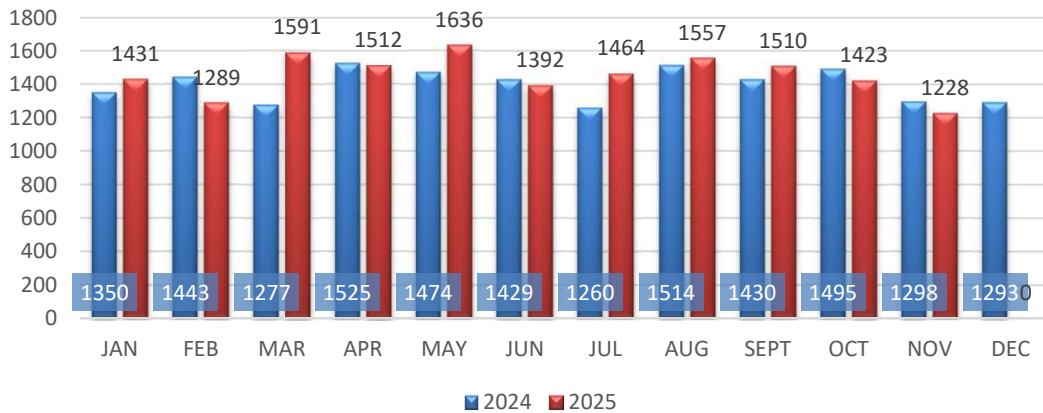
## Monthly Report

*Please note that the Police Department transitioned to a new Records Management System, which has affected the availability of individual unit response times. This data will be displayed when the figures become available.*

# Calls for Service

A call for service is generated anytime an officer responds to a dispatched event or self-initiates an event.

## Calls For Service by Month



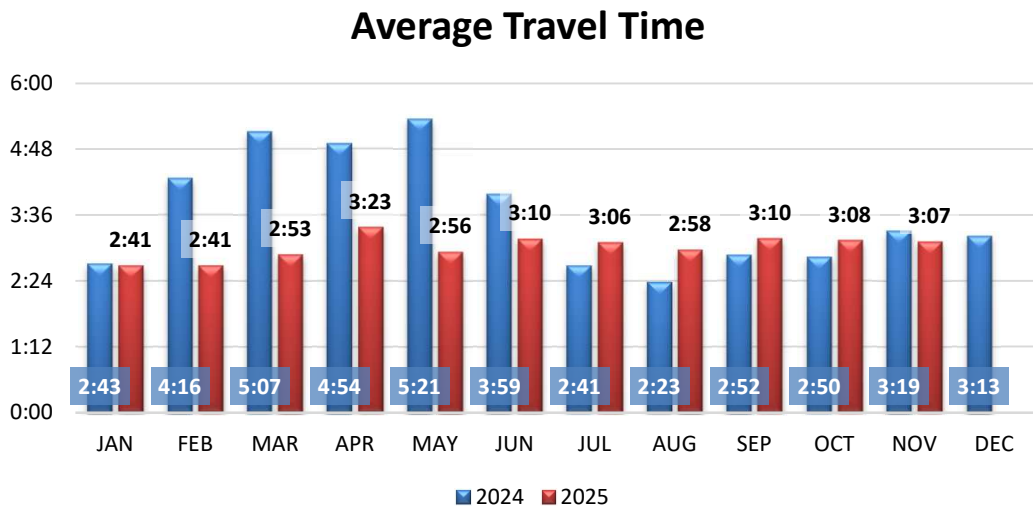
	JAN	FEB	MAR	APR	MAY	JUN	JUL	AUG	SEPT	OCT	NOV	DEC	TOTAL
2024	1350	1443	1277	1525	1474	1429	1260	1514	1430	1495	1298	1293	16788
2025	1431	1289	1591	1512	1636	1392	1464	1557	1510	1423	1228		16033

### Totals Year to Date Comparison for November

2024	15,495	
2025	16,033	3.47%

# Average Travel Time

Travel time is calculated from the time the first officer is dispatched to a call for service until the first officer arrives on scene.



	JAN	FEB	MAR	APR	MAY	JUN	JUL	AUG	SEPT	OCT	NOV	DEC
2024	2:43	4:16	5:07	4:54	5:21	3:59	2:41	2:23	2:52	2:50	3:19	3:13
2025	2:41	2:41	2:53	3:23	2:56	3:10	3:06	2:58	3:10	3:08	3:07	

### Average Year to Date Comparison for November

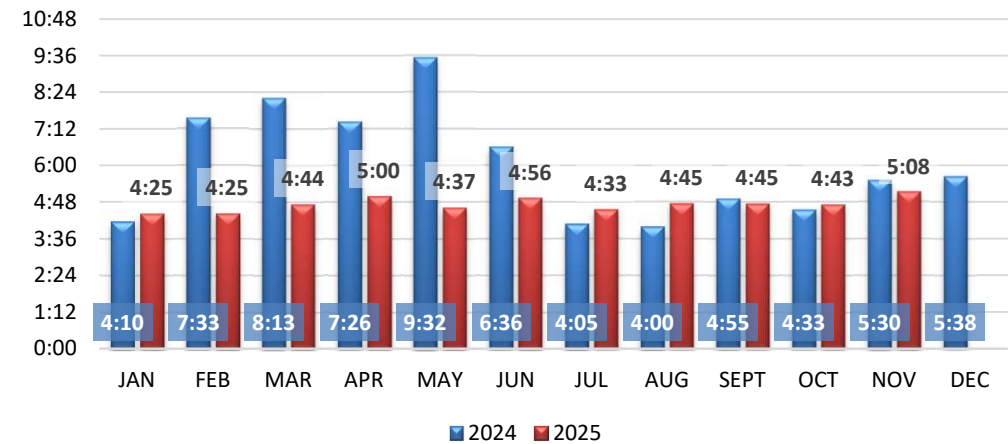
2024	03:40	
2025	03:01	-17.81%

\*THIS DATA EXCLUDES CALLS FOR SERVICE ASSIGNED TO PARKING ENFORCEMENT\*

# Average "Receive to Arrive" Time

"Receive to Arrive" time is calculated from the time a call is received in the Communications Center to the time the first officer arrives on scene.

Receive to Arrive Time



	JAN	FEB	MAR	APR	MAY	JUN	JUL	AUG	SEPT	OCT	NOV	DEC
2024	4:10	7:33	8:13	7:26	9:32	6:36	4:05	4:00	4:55	4:33	5:30	5:38
2025	4:25	4:25	4:44	5:00	4:37	4:56	4:33	4:45	4:45	4:43	5:08	

Average Year to Date Comparison for November

2024	06:03	
2025	04:44	-21.84%

\*THIS DATA EXCLUDES CALLS FOR SERVICE ASSIGNED TO PARKING ENFORCEMENT\*

## NIBRS Group A Crimes Reported

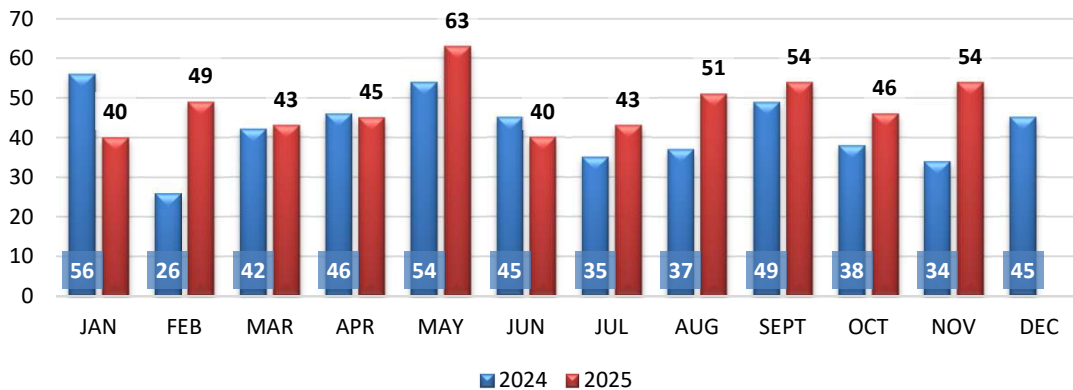
The National Incident-Based Reporting System (NIBRS) is used by the FBI to capture specific details about crimes and offenders through incident based reporting. Group A crimes are defined below.

Arson	0	Kidnapping/Abduction	0
Assault Offenses	4	Larceny/Theft Offenses*	30
Bribery	0	Motor Vehicle Theft	3
Burglary/B&E	5	Porn/Obscene Material	0
Counterfeiting/Forgery	0	Prostitution Offenses	0
Destruction/Damage	6	Robbery	1
Drug/Narcotic Offenses	0	Sex Offenses	1
Embezzlement	0	Sex Offenses, Nonforcible	0
Extortion/Blackmail	0	Stolen Property Offense	0
Fraud Offenses	4	Weapon Law Violations	0
Gambling Offenses	0	Human Trafficking Offenses	0
Homicide Offenses	0	Animal Cruelty	0
		<b>54</b>	

*\*Larceny includes BMV and Theft of Property offenses*

Nov              BMV:        13              Theft Prop:    17

## Year to Date Comparison NIBRS Group A Crimes Reported



	JAN	FEB	MAR	APR	MAY	JUN	JUL	AUG	SEPT	OCT	NOV	DEC
2024	56	26	42	46	54	45	35	37	49	38	34	45
2025	40	49	43	45	63	40	43	51	54	46	54	

### Totals Year to Date Comparison for November

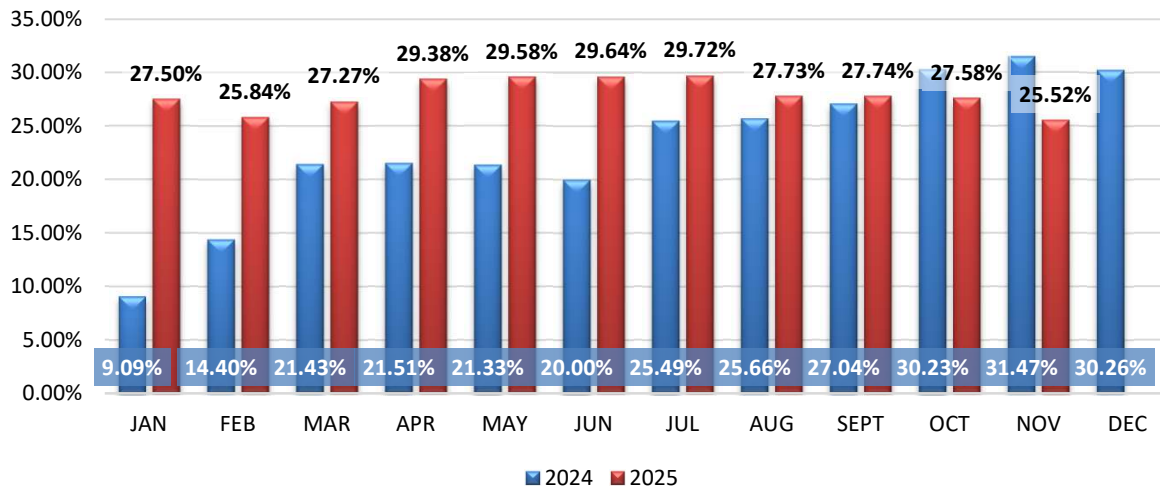
**2024**              462  
**2025**              528    14.29%

## NIBRS Group A Crimes Cleared

2025 Clearances Year to Date

NIBRS Category	Crimes	Cleared	%
Arson	0	0	0.0%
Assault Offenses	50	34	68.0%
Bribery	0	0	0.0%
Burglary/B&E	22	3	13.6%
Counterfeiting/Forgery	3	0	0.0%
Destruction/Damage	54	7	13.0%
Drug/Narcotic Offenses	44	47	106.8%
Embezzlement	0	0	0.0%
Extortion/Blackmail	1	0	0.0%
Fraud Offenses	26	2	7.7%
Gambling Offenses	0	0	0.0%
Homicide Offenses	0	0	0.0%
Kidnapping/Abduction	0	0	0.0%
Larceny/Theft Offenses	267	29	10.9%
Motor Vehicle Theft	50	5	10.0%
Porn/Obscene Material	3	2	66.7%
Prostitution Offenses	0	0	0.0%
Robbery	4	3	75.0%
Sex Offenses	2	0	0.0%
Sex Offenses, Nonforcible	0	0	0.0%
Stolen Property Offenses	1	1	100.0%
Weapon Law Violation	2	2	100.0%
Human Trafficking Offenses	0	0	0.0%
Animal Cruelty	0	0	0.0%
<b>Total</b>	<b>529</b>	<b>135</b>	<b>25.5%</b>

## Monthly Percentage NIBRS Group A Crimes Cleared

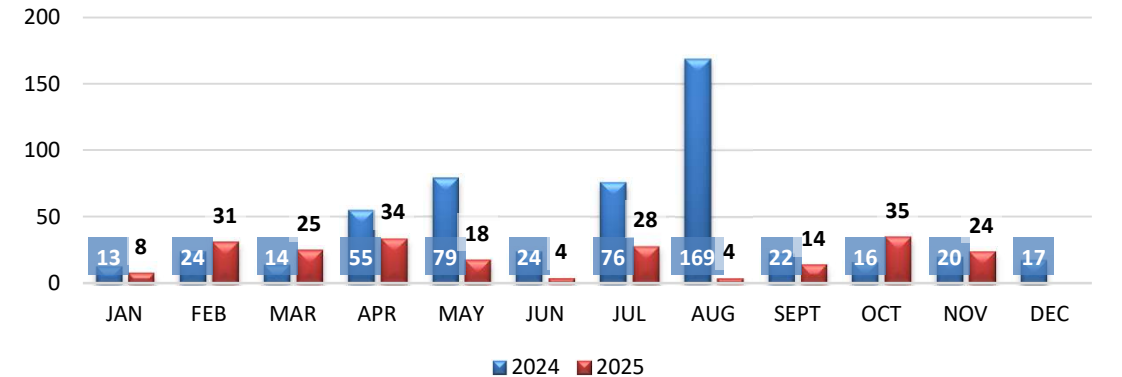


# Municipal Warrant Clearance/Contact Activity

A University Park Municipal Court warrant is cleared either by an arrest, fines paid by defendant, or dismissal by judge.

A **warrant contact** is an effort by the Warrant Officer to locate the person wanted. All contacts do not result in a warrant clearance.

## Warrant Clearances

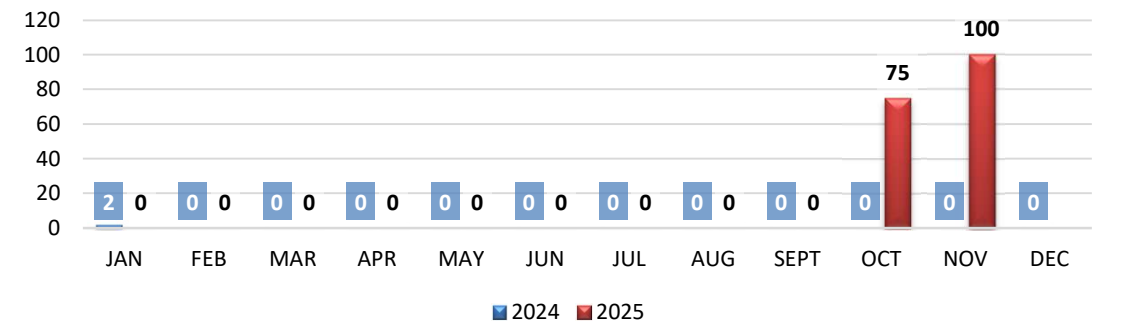


	JAN	FEB	MAR	APR	MAY	JUN	JUL	AUG	SEPT	OCT	NOV	DEC	TOTAL
2024	13	24	14	55	79	24	76	169	22	16	20	17	529
2025	8	31	25	34	18	4	28	4	14	35	24		225

### Totals Year to Date Comparison for November

2024	529	
2025	225	-57.47%

## Warrant Contacts



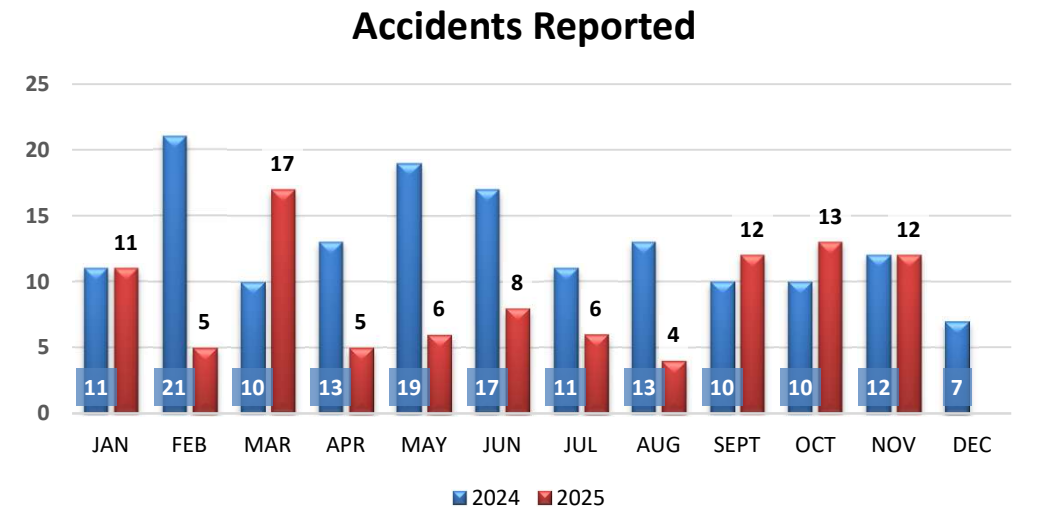
	JAN	FEB	MAR	APR	MAY	JUN	JUL	AUG	SEPT	OCT	NOV	DEC	TOTAL
2024	2	0	0	0	0	0	0	0	0	0	0	0	2
2025	0	0	0	0	0	0	0	0	0	75	100		175

### Totals Year to Date Comparison for November

2024	2	
2025	175	8650.00%

# Accidents Reported

Accidents are the number of traffic related accidents reported to the University Park Police Department where an accident investigation was completed.



	JAN	FEB	MAR	APR	MAY	JUN	JUL	AUG	SEPT	OCT	NOV	DEC
2024	11	21	10	13	19	17	11	13	10	10	12	7
2025	11	5	17	5	6	8	6	4	12	13	12	

## Totals Year to Date Comparison for November

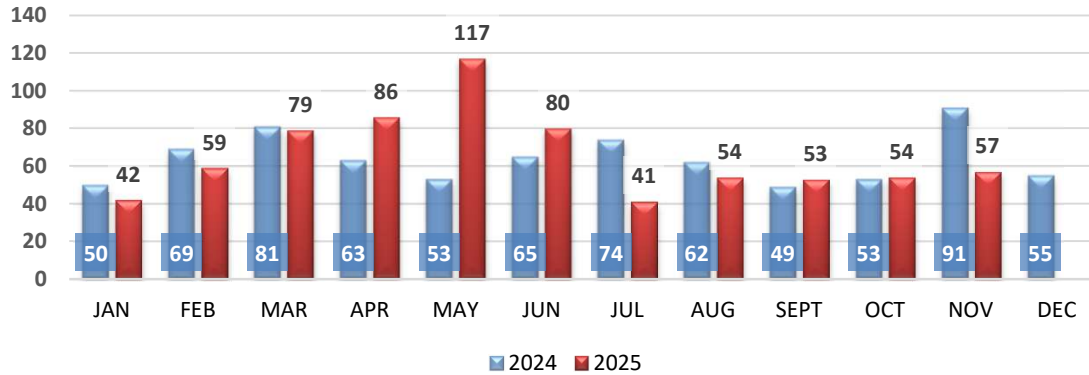
2024	147	
2025	99	-32.65%



# Animal Control Report

University Park Animal Control regards the administration, communication, investigation and enforcement of all codes, ordinances and regulations related to animal control, animal cruelty and neglect and perform duties to promote education and compliance with laws regulating animal treatment.

## Total Animal Calls

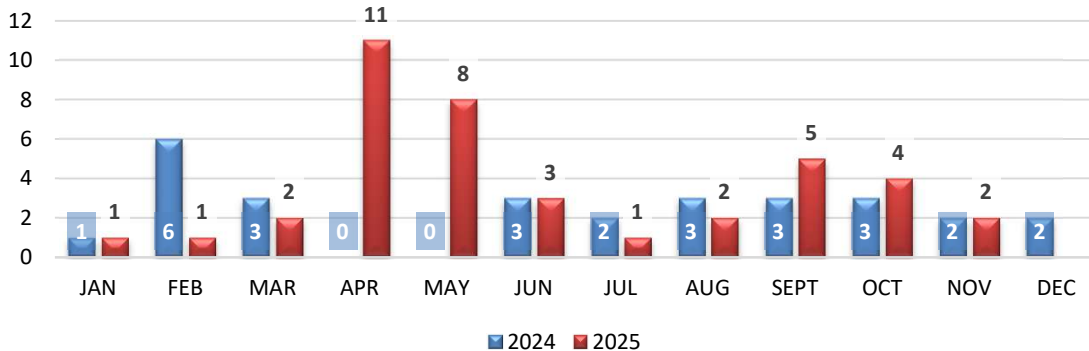


	JAN	FEB	MAR	APR	MAY	JUN	JUL	AUG	SEPT	OCT	NOV	DEC
2024	50	69	81	63	53	65	74	62	49	53	91	55
2025	42	59	79	86	117	80	41	54	53	54	57	

### Totals Year to Date Comparison for November

2024	710	
2025	722	1.69%

## Total Animal Impounds/Rescues



	JAN	FEB	MAR	APR	MAY	JUN	JUL	AUG	SEPT	OCT	NOV	DEC
2024	1	6	3	0	0	3	2	3	3	3	2	2
2025	1	1	2	11	8	3	1	2	5	4	2	

### Totals Year to Date Comparison for November

2024	26
2025	40

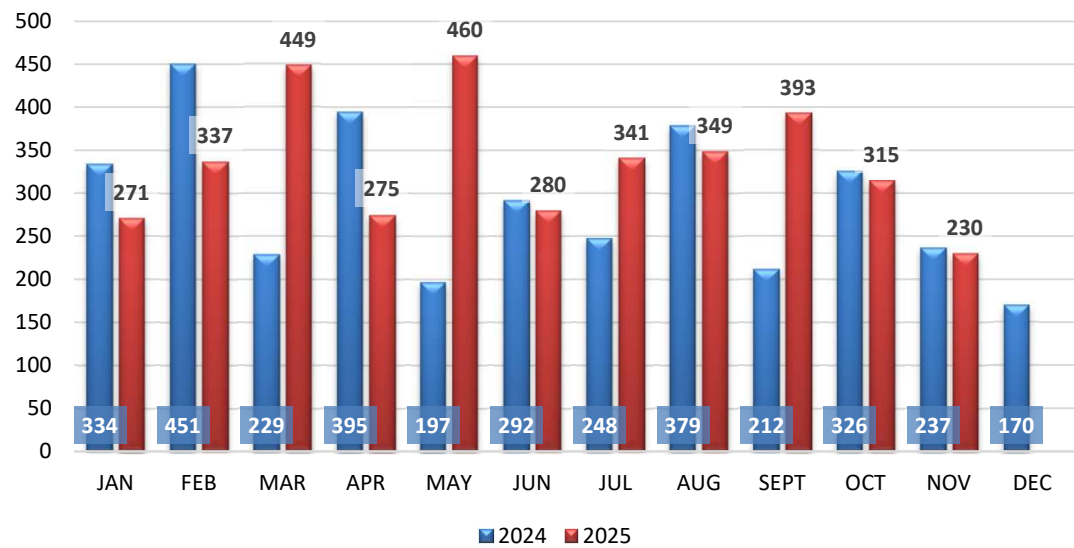
### Animal Impound/Rescue Report

	November	Year-to Date
Animal Impounds	1	22
Animal Rescues	1	18

# Citations Issued

Citations are issued for traffic offenses, Class C Penal Code offenses, and city ordinance violations.

## Citations Issued



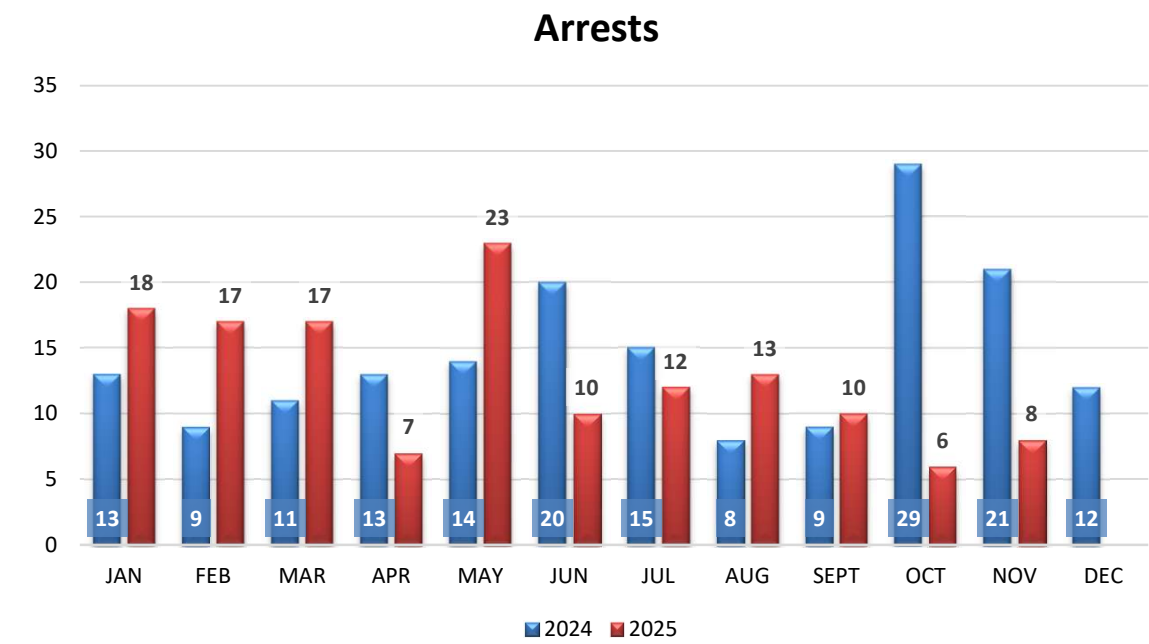
	JAN	FEB	MAR	APR	MAY	JUN	JUL	AUG	SEPT	OCT	NOV	DEC	TOTAL
2024	334	451	229	395	197	292	248	379	212	326	237	170	3,470
2025	271	337	449	275	460	280	341	349	393	315	230		3,700

### Totals Year to Date Comparison for November

2024	3,300	
2025	3,700	12.12%

# Arrests

Total number of arrests made by UPPD officers and includes both adult and juvenile arrests.



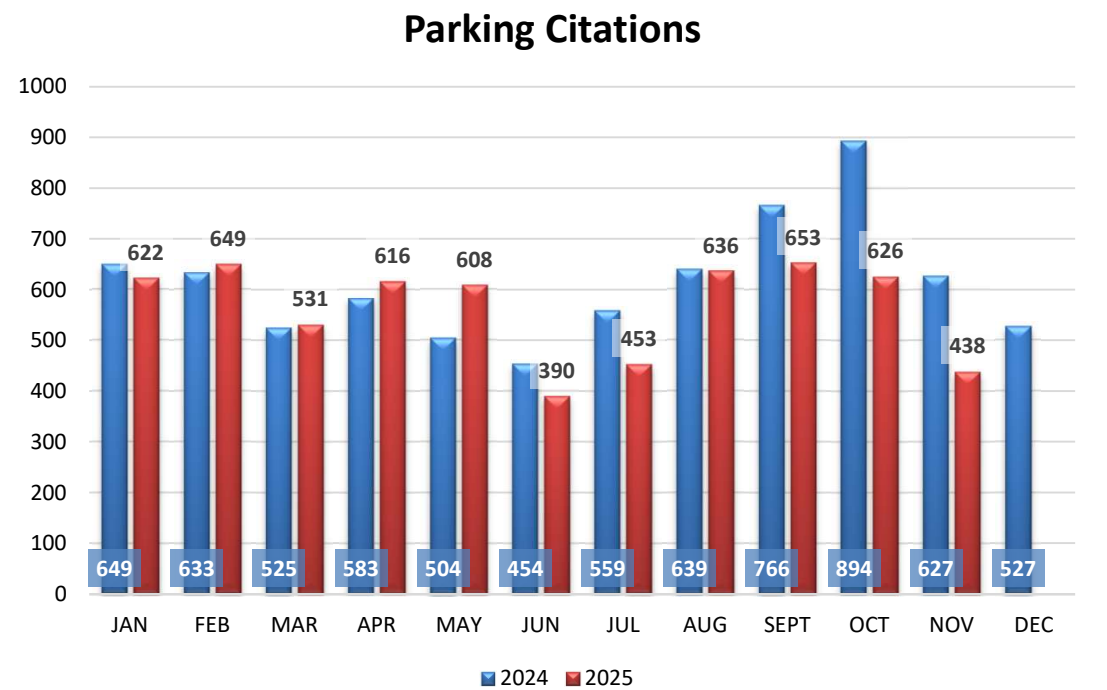
	JAN	FEB	MAR	APR	MAY	JUN	JUL	AUG	SEPT	OCT	NOV	DEC		TOTAL
2024	13	9	11	13	14	20	15	8	9	29	21	12		174
2025	18	17	17	7	23	10	12	13	10	6	8			141

### Totals Year to Date Comparison for November

2024	162	
2025	141	-12.96%

# Parking Citations

Parking citations written include violations of state law and city ordinances.



	JAN	FEB	MAR	APR	MAY	JUN	JUL	AUG	SEPT	OCT	NOV	DEC	TOTAL
2024	649	633	525	583	504	454	559	639	766	894	627	527	7360
2025	622	649	531	616	608	390	453	636	653	626	438		6222

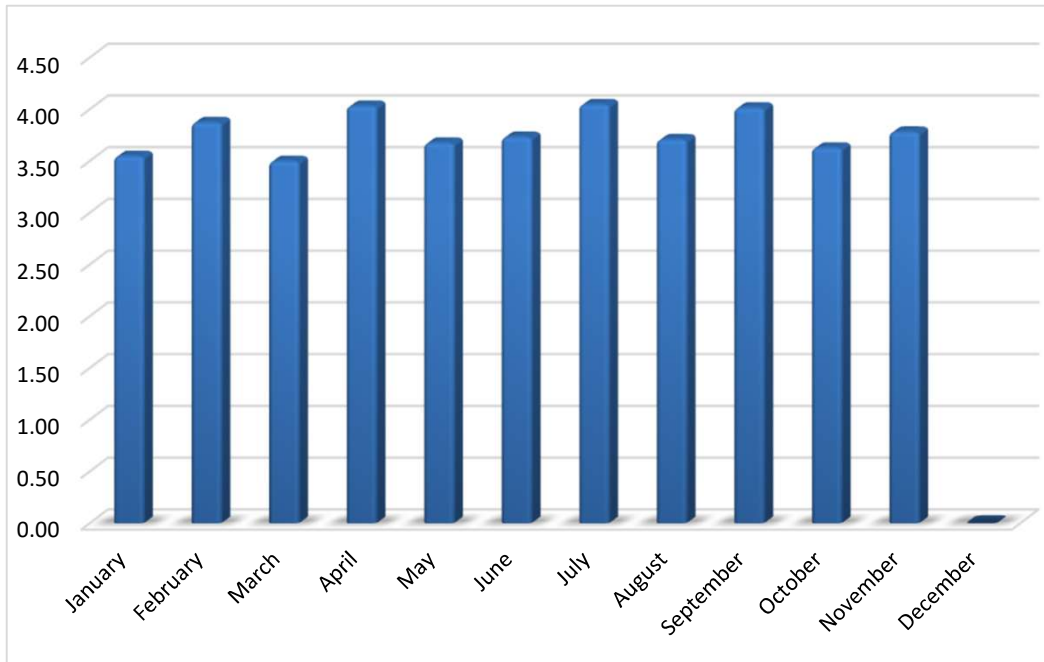
### Totals Year to Date Comparison for November

2024	6,833	
2025	6,222	-8.94%

# Beat Staffing Average

Beat Staffing is the average daily number of officers assigned to beat areas on a per shift basis.

## Beat Officers Only



	JAN	FEB	MAR	APR	MAY	JUN	JUL	AUG	SEPT	OCT	NOV	DEC
2024	3.74	3.96	3.52	3.78	3.55	3.5	3.44	3.61	3.55	3.61	3.4	3.5
2025	3.55	3.88	3.5	4.03	3.68	3.73	4.05	3.71	4.02	3.63	3.78	

## Average Year to Date Comparison for November

2024	3.61	
2025	3.78	4.79%